

1 2 3 4 5 6 7 8

A

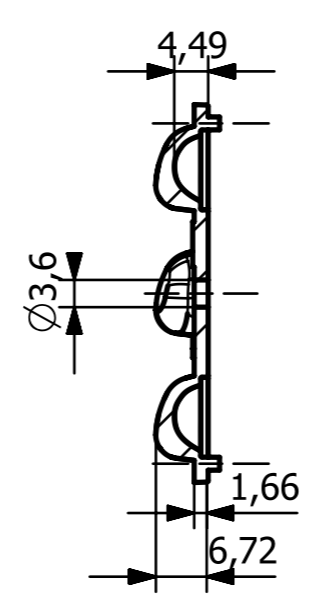
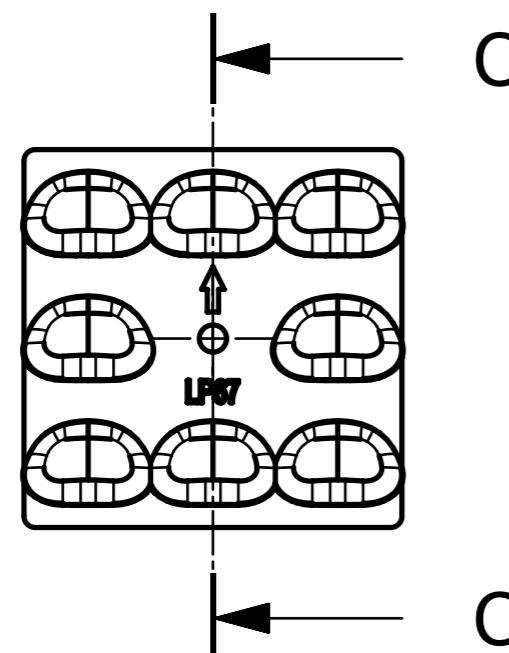
B

C

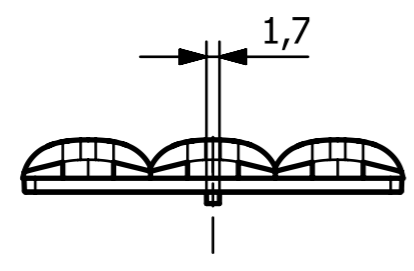
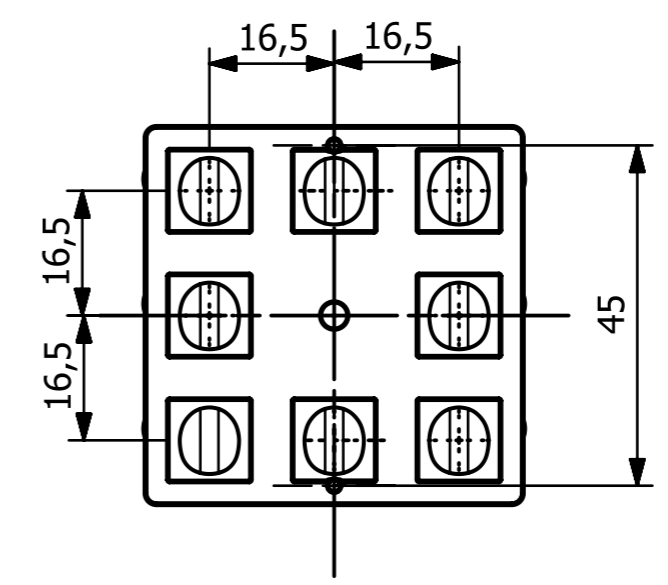
D

E

F




SECTION C-C



GENERAL INFO:-

- 1. Lens material - Optical PC
- 2. Operating Temperature range -40° _ +110°(upper limit +130°)
- 3. Storage Temperature range -40° _ +110°(upper limit +130°)
- Average Transmittance in visible spectrum 400nm-700nm>90%
- Usage and Maintenance
- 1. If necessary, clean lenses with mild soap, water and soft cloth.
- 2. Never use any commercial cleaning solvents like Alcohol.
- 3. Handle and install lenses with wearing gloves, skin oils may Damage lenses or its optical characteristics,.

		<h2>LENS POINT (INDIA) PVT. LTD.</h2>		
Drawn By	AKASH	Title -LP60_4x1_5050_25°_50509.8_FL23		
Checked by	VISHAL			
Approved by		Size A3	OPEN TOL.- ±0.2 MM	ALL DIMENSIONS ARE IN MM
Date	18-04-2022	Scale 1:1	MATERIAL - PC	

1 2 3 4 5 6 7 8 A3